

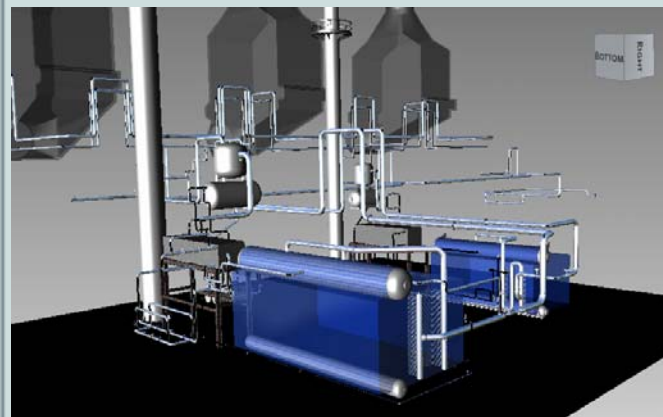
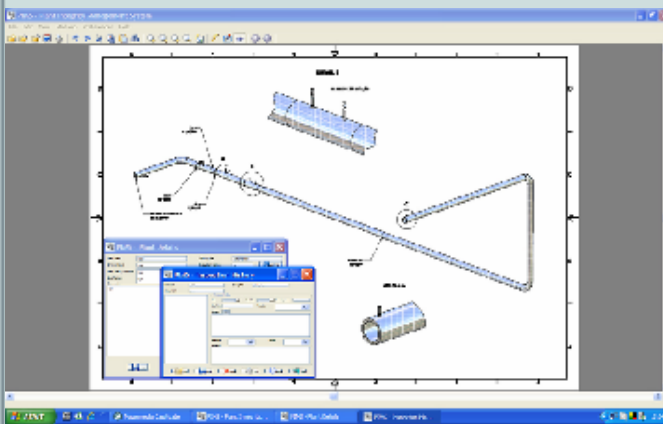
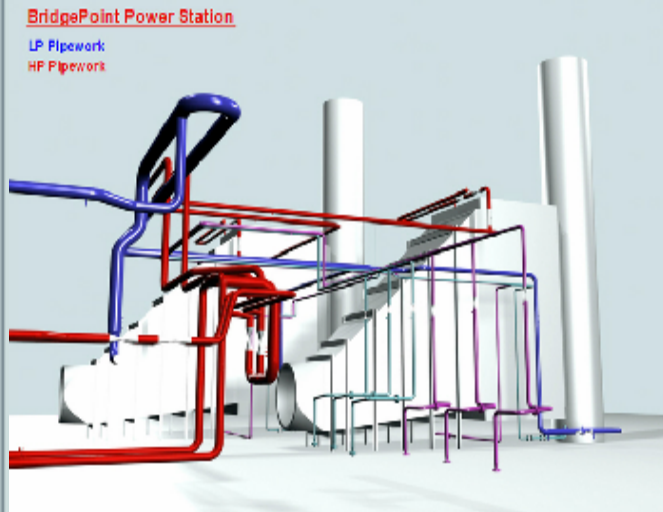
PIMS

is feature rich software for the Microsoft Windows operating system. It provides you with the capability for efficient planning and maintenance inspection records over the lifetime of a plant asset. The use of PIMS enables you to create a simple link between a graphical representation of an asset and a database management system; it provides you with the means to quickly and accurately add drawings and documents from many industry standard formats.

PIMS was originally developed for power station pipeline inspections where it currently provides the station engineers with a means for planning inspection regimes and combines the easy analysis and consolidation of inspection data.

PIMS has also been used in a variety of other projects, from turbine and storage tank inspections to managing new build QA records.

The variety of possible applications for PIMS is huge, wherever the storage and easy retrieval / analysis of inspection data for asset management purposes would benefit from a quick and easy link to graphics or relevant drawing / data files. The versatility of the integrated database, is such that it is an extremely useful tool on its own.



PIMS Features

Below are just some of the many features you will find in PIMS:

- Create interactive walk-through of plant schematics.
- Fully integrated inspection, document and data management.
- Extensive search capabilities for interrogating your data.
- Output report data to PDF, RTF and XLS formats, without the need for costly third party tools.
- Mark-up drawings and documents.
- Link to programs, files and documents from a single user-friendly interface.
- View and add drawings and documents from many industry standard file formats.
- Administrator and standard user levels of access for added security.
- Efficient single point of access to all documents and data related to a plant asset.

Integrity NDT Ltd. use our experience with PIMS to create projects for clients worldwide. Alternatively, the software is available for purchase in standalone or networked versions with a comprehensive user guide.

From Plant Details

PIMS - Plant Integrity Management System

PIMS - Plant Details

Plant Ident: HP1W001
 Original Ident: Weld 1
 Plant Area / Location: HP1 Main Steam
 Specification: SA335P2
 Drawing Ref: HP1013
 Inspection History: Yes
 Plant / Fitting Type: Butt Weld

Comments: Nominal pipe thickness 33.32mm.

Buttons: Save, Delete, Print, Close

To Inspection History

PIMS - Plant Integrity Management System

PIMS - Inspection History

Plant Ident: HP1W001
 Original Ident: Weld 1
 Drawing Ref: HP1013

13/03/1999 - MPI / UT
 14/03/1999 - Material Identification (PMI)
 01/04/2002 - Material Identification (PMI)
 01/04/2002 - MPI / UT
 21/01/2006 - MPI
 21/01/2006 - UT
 22/01/2006 - Defect Referral
 03/02/2006 - Replication
 27/10/2007 - Replication
 27/11/2007 - TOFD

Inspection Details

Date: 13/03/1999
 Next Due: 13/03/1999
 Operating Hours: 33000
 Report No.: DEA/99/HRSG1/NDT/053
 Procedure: MPI / UT

Summary: ABC

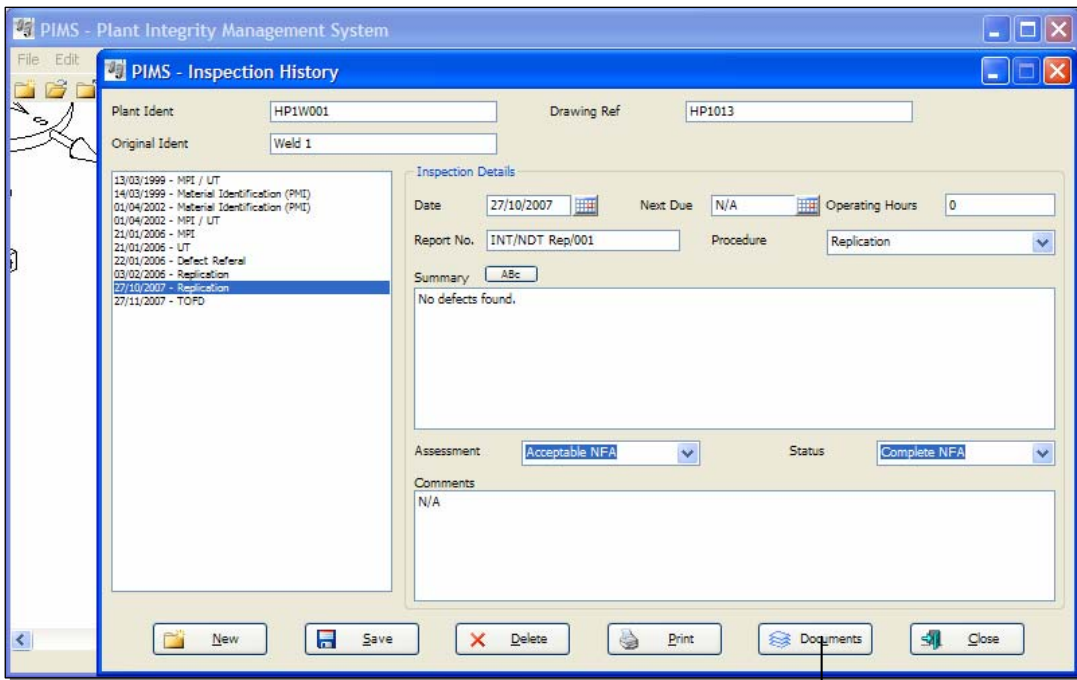
No indications found.

Assessment: Acceptable NFA
 Status: Complete NFA

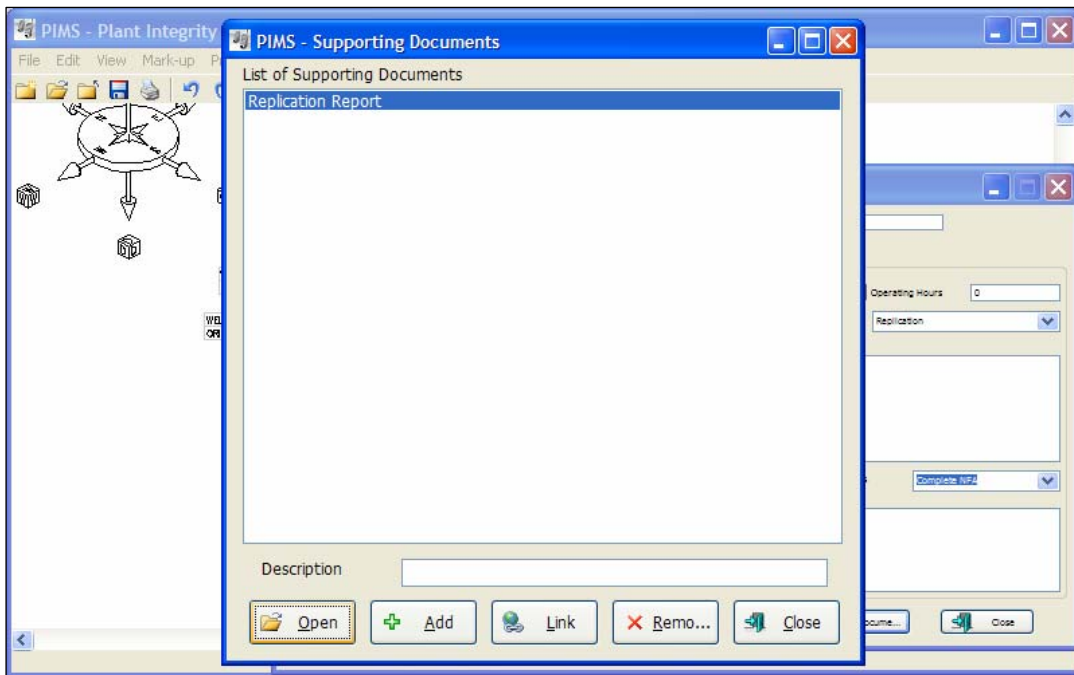
Comments: N/A

Buttons: New, Save, Delete, Print, Documents, Close

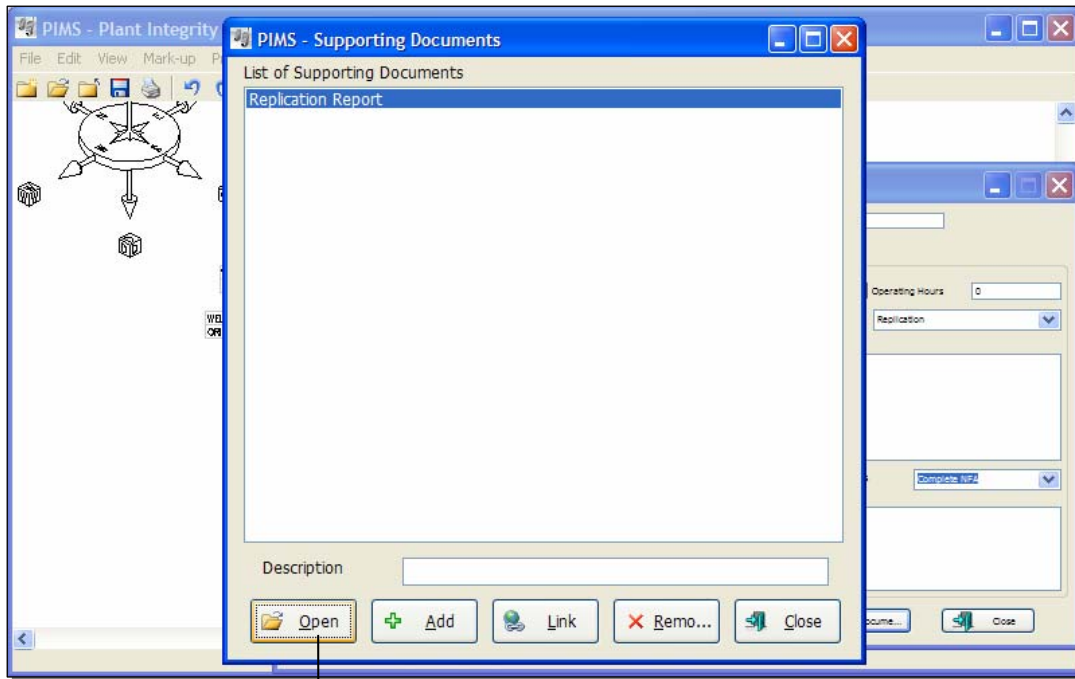
From Inspection History



To Supporting Documents



From Supporting Documents



To Live Documentation



PIMS

...From Project Management To Asset Management...

...From Data Management To Document Management...

**To find out more about the Plant Integrity Management System,
please feel free to contact us.**

info@integrityndt.com

Tel. +44 (0)1244 851904